

# ENVIRONMENTAL SCIENCE SERVICES



*Providing Effective Environmental Solutions*

# *Creatively Attaining Environmental Goals*

Understanding and addressing environmental issues are among the most resource-consuming activities for public- and private-sector organizations. Beyond the need to closely monitor the ever-changing federal, state, and local environmental regulations, affected parties also face the challenge of determining applicability, evaluating the appropriate options, and effectively implementing the selected course of action. Moreover, all of these must be accomplished under increasingly restrictive cost constraints.

ATM offers complete environmental science and engineering services to resolve the issues facing today's public- and private-sector entities. Whether addressing a community's concerns regarding environmental sustainability or designing and permitting a developer's wetland mitigation site, our professionals have the demonstrated qualifications necessary to meet the goals and requirements of our clients. ATM's environmental scientists and engineers have a long history of reducing the confusion and cost-impact of environmental regulations for municipal, industrial, port, developer, and other stakeholder clients.



ATM professionals work in a number of distinct environments, including streams, rivers, marshes, wetlands, harbors, forests, reefs, coastal dunes, and open ocean. Whatever and wherever the environmental issue, you can count on ATM to address your needs through creative and effective means.

*Environmental Assessments*

*Wetland Services*

*Surveying and Mapping*

*Ecological Studies*

*Field Monitoring*

*Land and Resource Management*



## Environmental Assessments

An accurate environmental assessment is critical for planning and permitting any project. ATM's staff consists of ecologists, water resource engineers and scientists, geologists, and other experts that provide comprehensive and valid assessments for every need.

### ATM's environmental assessment services include:

- Environmental Impact Statements (EIS)
- NEPA and CWA Section 404 Compliance
- Surface and Ground Water Assessments
- Geological, Soil and Sediment Testing
- Risk Assessments
- Permitting Facilitation



An Environmental Impact Statement was completed for the expansion of Paradise Island Resort, Bahamas

## Wetland Services

As the primary focus of NEPA and Clean Water Act Section 404 permitting, wetlands must be addressed during the project development process. ATM is staffed with a number of experts experienced in managing all aspects of wetland projects, from initial delineation and verification to ensuring wetland avoidance, impact minimization, mitigation design, and post-project monitoring. ATM's permitting know-how and demonstrated ability to develop solid relationships with stakeholders and resource agencies further contribute to our success with wetland projects.



Created marsh mitigation area for turning basin in Savannah Harbor

### Examples of our wetland services include:

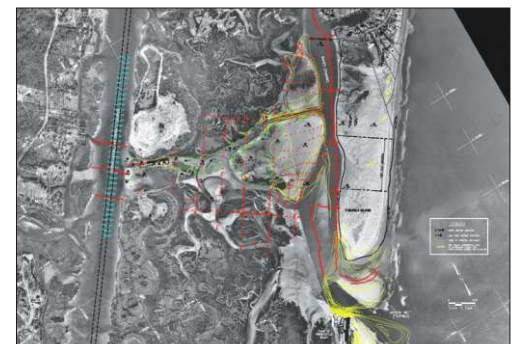
- Delineation and Certification
- Functional Assessments
- Permitting Assistance
- Mitigation Calculations and Design
- Created Wetlands for Wastewater/Stormwater Treatment
- Field Oversight and Monitoring

## Surveying and Mapping

Precise surveying and mapping is essential in project planning, design, pre- and post-construction analysis, and post-project monitoring. ATM provides the broad range of quality survey and mapping services clients require for projects in all locations, whether terrestrial or underwater.

### ATM's surveying and mapping services include:

- Bathymetric and Magnetometer Surveying
- Side-scan Sonar
- Land and Boundary Surveying
- Seagrass Mapping
- GIS Database Creation and Analysis
- GPS and Cartography



Rectified aerial photograph indicating post-hurricane shoreline and wetland loss, as well as potential wetland mitigation and core boring sites

# Providing Effective Environmental Science Solutions

## Ecological Studies

Ecological issues and their associated regulatory challenges affect many public- and private-sector organizations. At ATM, our approach to ecological studies incorporates an in-depth assessment of our client's immediate project needs relative to their long-term goals. We routinely coordinate with local, state, and federal agencies to ensure studies are designed which address both client and agency requirements. ATM's broad capabilities in sampling design, data collection, analysis, and interpretation allow for effective studies of all ecosystem types.

### Our comprehensive list of ecological services includes:

- Ecosystem Inventories and Change Studies
- Ecological Modeling
- Regulatory Compliance Monitoring
- Habitat Protection and Management
- Threatened and Endangered Species Evaluations



Ecological and biological studies were conducted in support of the redevelopment and preservation of an underwater park and marine museum, Graeme Hall Swamp, Barbados

## Field Data Collection and Analysis



Salinity testing being performed in a basin mangrove forest in Macao, Dominican Republic



Sediment sampling in Bimini, Bahamas

Effective data collection and analysis requires a broad knowledge of diverse environmental systems, clear interpretation of regulatory requirements, and successful collaboration with government agencies. ATM professionals deliver tailored data collection design and implementation services to successfully meet each of these needs.

### ATM's data collection and analysis efforts include:

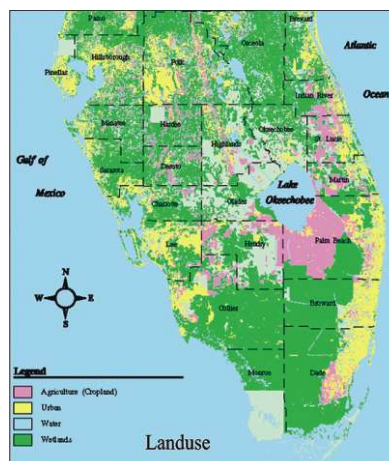
- Continuous Water Quality Monitoring
- Hydrodynamic Monitoring
- Meteorological Measurement
- Water, Soil, Sediment and Biota Sampling
- Biological Interpretation Services

## Land and Resource Management

Whether for long-term stewardship or new development activities, ATM has an experienced group of environmental engineers and scientists capable of cost-effectively attaining your land and resource management goals.

### ATM helps public- and private-sector clients manage their land and resources by providing:

- Conceptual Alternatives and Feasibility Studies
- Environmental Function Sustainability Analyses
- On-Site Stormwater/Wastewater Treatment Evaluation
- Innovative Land Use Design
- Master Planning
- Stakeholder Education and Coordination



GIS-generated landuse map for an alternative site analysis



**ATM**<sup>SM</sup>  
APPLIED TECHNOLOGY & MANAGEMENT  
**ATM**

# Representative Environmental Sciences Experience

## **Environmental Resources Permitting Services** **Palm Coast Plantation, Flagler County, Florida**

ATM assisted Florida Waterway Properties, LLC with all environmental permitting issues for the proposed 700-acre Palm Coast Plantation Subdivision(s). Each phase of the project involved extensive coordination with regulating agencies, including the U.S. Army Corps of Engineers, the St. Johns River Water Management District, the Florida Fish and Wildlife Conservation Commission, and the U.S. Fish and Wildlife Service.

### **ATM's services for Palm Coast include:**

- Environmental Resources Permit Support
- Threatened and Endangered Species Evaluations
- Design and Permitting of Bald Eagle Protection and Management Plan
- Wetland Delineation and Design of Wetland Mitigation Areas
- Environmental Due Diligence for Possible Land Acquisition



Sited bald eagle's nest in Palm Coast Plantation, Florida

## **Southern Liquid Natural Gas (SLNG) Facility** **El Paso Energy**

ATM was the lead environmental sciences firm involved in the expansion of the SLNG facility in Savannah, Georgia. El Paso Energy needed to construct two berths for loading liquified natural gas aboard tankers, which required excavation of the existing site.



SLNG Berthing Facility, Savannah, Georgia

### **ATM provided all environmental engineering services for the SLNG expansion project, including:**

- Sediment Geochemistry Sampling and Analysis
- Wetland Delineation and Mitigation Planning, Permitting and Construction Oversight
- Fisheries Studies
- Threatened and Endangered Species Study
- NEPA Permitting Assistance and Facilitation

## **Okeechobee Landfill** **Waste Management, Inc.**

ATM has provided environmental permitting and science support for the construction, expansion, and operations of this major landfill operation in south-central Florida.

### **ATM's environmental science services in Okeechobee have included:**

- Threatened and Endangered Species Studies
- Development and Implementation of Endangered Species Relocation Program
- Ground Water Impact Studies
- Wetland Delineation and Mitigation Planning and Permitting



Waste Management, Inc. landfill in Okeechobee, Florida



## REPRESENTATIVE ENVIRONMENTAL SCIENCES CLIENTS

*Atlantic Beach Management  
Brighton Seminole Indian Reservation  
City of Baxley, Georgia  
City of Gainesville, Florida  
City of Glennville, Georgia  
City of Pooler, Georgia  
Cooper River Water Users Association  
Dorchester County, South Carolina  
El Paso Energy/Southern Liquid Natural Gas  
Fripp Island Public Service District, South Carolina  
Fuji Vegetable Oil, Inc.  
Georgia Ports Authority  
Harber International Industrial Park and Berthing  
Indian River County, Florida  
International Paper Realty of South Carolina  
Kiawah Island Company  
New Hanover County, North Carolina  
Okeechobee Landfill, Inc.  
Palm Beach County, Florida  
Seminole Electric Cooperative, Inc.  
Shell Island Homeowners Association, North Carolina  
South Carolina State Ports Authority  
South Florida Water Management District  
St. Johns County, Florida  
Summerville Commissioners of Public Works  
Town of Longboat Key, Florida  
Waste Management, Inc.*

**Office Locations:**

Charleston, SC  
Hilton Head Island, SC  
Gainesville, FL  
Jacksonville Beach, FL  
St. Augustine, FL  
West Palm Beach, FL  
Dubai, UAE



[www.appliedtm.com](http://www.appliedtm.com) | 1-800-275-6488

Coastal, Environmental, Marine, and Water Resources Engineering