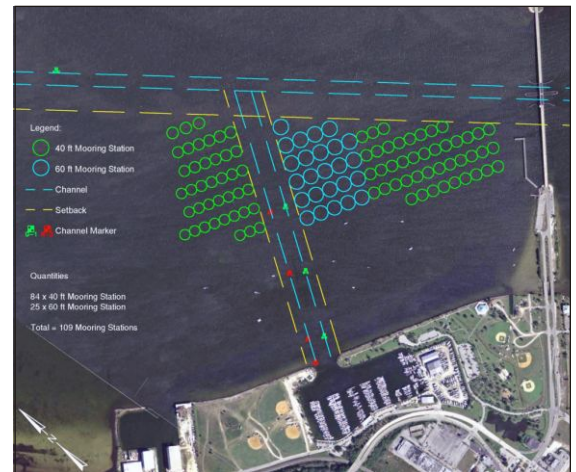


Titusville Municipal Marina Mooring Field

City of Titusville, Florida

Services Rendered

- Conducted Detailed Bathymetric Survey, Site Assessments, Conceptual Design, and Reports
- Completed Detailed Seagrass Surveys in Accordance with the Brevard Manatee Protection Plan
- Comprehensive Municipal Planning, Including Building and Zoning
- Site Planning and Development Review
- Applying for Sovereignty Submerged Land-Lease Modifications and/or Renewals
- Applying for all Necessary Permits from Agencies
- Participation in Public Meetings
- Preparing and Submitting Project Design from Conceptual to Present
- Preparation of Bid Documents
- Review of Contractor Submittals



Project Summary

ATM was selected to provide professional engineering services to permit and design the City's mooring field located between the Titusville Municipal Marina basin and the Intracoastal Waterway, within an area of approximately 115 acres.

The mooring field required an Environmental Resource Permit (ERP) to meet the very strict requirements of the Brevard County Manatee Protection Plan (MPP). In addition to Manatee Issues, the proposed mooring field had significant seagrass concerns. This effort required consultation with federal, county, local and state officials to streamline the process as much as possible and develop efficient methods for carrying out the required steps in the permit process.

ATM first completed site surveys and assessments to document existing conditions. A design was prepared and submitted that allowed the greatest vessel capacity while still providing ample navigational clearance and environmental buffers to seagrasses, etc. Other services included dinghy dock and related facilities design recommendations, etc., and submerged land lease surveys for the mooring area and marina.

The mooring field will feature the first empirical testing location for adverse effects due to seagrass shading in a mooring field. The testing will be conducted jointly between the City of Titusville and the Florida Department of Environmental Protection.